


BOTANICA II SPRING

BY THE COLOR PRINCIPLE



Finished Quilt Size: 48" x 64"

A Free Project Sheet From

 **Henry Glass & Co., Inc.**



49 West 37th Street, New York, NY 10018

tel: 212-686-5194 fax: 212-532-3525

Toll Free: 800-294-9495

www.henryglassfabrics.com

[facebook](#)

BOTANICA II SPRING

Fabrics in the Collection



7758-77
Blue Printed Panel



7758-88
Red Printed Panel



7759-55
Purple Dahlias



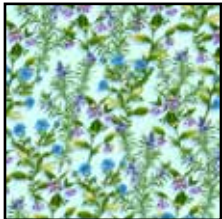
7759-88
Red Dahlias



7760-11
Blue Crocuses



7760-22
Pink Crocuses



7761-11
Blue Wildflowers



7761-44
Cream Wildflowers



7762-77
Blue Tulips



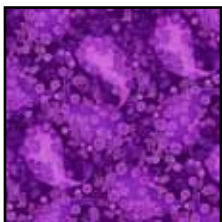
7762-99
Red Tulips



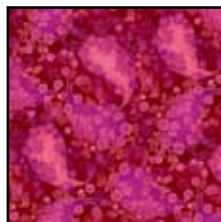
7763-77
Blue Damask



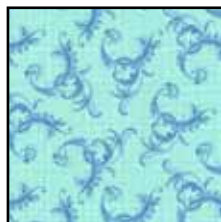
7763-88
Red Damask



7764-55
Violet Paisley



7764-88
Red Paisley



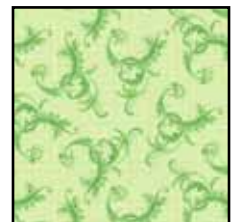
7765-11
Blue Swirls



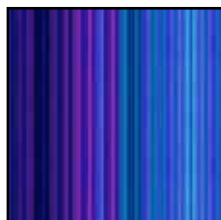
7765-22
Pink Swirls



7765-33
Yellow Swirls



7765-66
Green Swirls



7766-77
Blue Stripe



7766-88
Red Stripe



7767-66
Green Leaves



7767-77
Blue Leaves

Materials

2/3 yard	Red Printed Panel <i>(one full panel)</i>	7758-88
7/8 yard	Cream Wildflowers	7761-44
7/8 yard	Red Damask	7763-88
1/4 yard	Red Paisley	7764-88
1/4 yard	Cream Tonal	7755-04*
1/4 yard	Orange Tonal	7755-36*
3/4 yard	Green Tonal <i>(includes binding)</i>	7755-62*
1/2 yard	Dark Green Tonal	7755-68*
1/4 yard	Red Tonal	7755-88*
3 3/8 yards	Red Dahlias	7759-88

(for quilt backing/2 horizontal panels)

*Please note, all tonal fabrics are from the Folio Basics Collection by Henry Glass, reference swatches are provided below.



7755-04	7755-36	7755-62	7755-68	7755-88
Cream Tonal	Orange Tonal	Green Tonal	Dark Green Tonal	Red Tonal

Cutting Instructions

Please note: all strips are cut across the width of the fabric from selvage edge to selvage edge.

From the printed panel, cut:

- (1) piece, 22 1/2" wide x 38 1/2" long, with the central floral motif centered in both directions.

From the cream wildflowers, cut:

- (4) 6 1/2" strips for the second border. Trim (2) strips to 38 1/2" long. Trim (2) strips to 22 1/2" long.

From the red damask, cut:

- (6) 4 1/2" strips for the fourth border.

From the red paisley, cut:

- (1) 2" strip. Recut into (4) 2" x 5" and (4) 2" x 3 1/2" pieces.

From the cream tonal, cut:

- (2) 2" strips. Recut into (4) 2" x 3 1/2" pieces and (20) 2" x 2" squares.

From the orange tonal, cut:

- (1) 2" strip. Recut into (8) 2" x 2" squares.

From the green tonal, cut:

- (6) 2 1/4" strips for the binding.
- (5) 2" strips for the third border.

From the dark green tonal, cut:

- (6) 2" strips. Recut (2) strips into (8) 2" x 6 1/2" pieces. Trim (2) strips to 38 1/2" long. Trim (2) strips to 22 1/2" long.

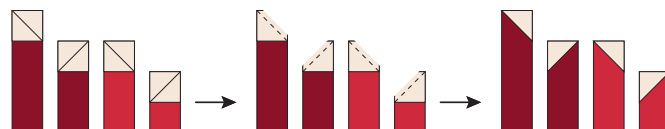
From the red tonal, cut:

- (2) 2" strips. Recut into (4) 2" x 6 1/2" and (4) 2" x 5" pieces.

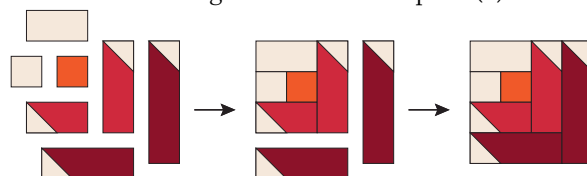
Sewing Instructions

All seams are sewn using 1/4" seam allowance with pieces held right sides together and raw edges even.

1. Draw diagonal lines on the wrong sides of (4) 2" cream tonal squares. Right sides together, layer the marked squares on one end of (1) 2" x 5" and (1) 2" x 3 1/2" red paisley pieces and (1) 2" x 5" and (1) 2" x 6 1/2" red tonal pieces. Note the orientation of the marked lines on the cream tonal squares. Sew on the marked lines. Trim 1/4" beyond the seam lines and press the resulting cream triangles to make the units shown.



2. To make one flower block, arrange as shown: (1) 2" orange tonal square, (1) 2" cream tonal square, (1) 2" x 3 1/2" cream tonal piece, and all units made in step 1. Assemble the units in the order shown in the diagram below to complete (1) flower block.



3. Repeat steps 1 and 2 to make a total of (4) flower blocks.

Quilt Assembly

1. Referring to the quilt pictured on the cover, stitch 2" x 38 1/2" dark green tonal strips to the left and right sides of the trimmed printed panel. Sew 2" orange tonal squares to each end of the (2) 2" x 22 1/2" dark green tonal strips. Sew these pieced borders to the top and bottom of the printed panel.
2. Stitch 2" x 6 1/2" dark green tonal strips to each end of each 6 1/2" x 38 1/2" cream wildflowers strip. Sew the pieced border units to the left and right sides of the quilt top. Stitch 2" x 6 1/2" dark green tonal pieces to each end of both 6 1/2" x 22 1/2" cream wildflowers strips. Stitch a pieced flower block to each end of each border unit, noting orientation of the flower blocks. Sew a pieced border unit to the top and bottom of the quilt top.
3. Trim the selvages from the 2" green tonal strips reserved for the third border. Sew the strips together end to end to make a long 2" strip. From this long strip, cut (2) 53 1/2" and (2) 40 1/2" lengths *(if your measurements are different, cut to fit your quilt top)*. Stitch the longer strips to the left and right sides of the quilt top. Sew the shorter strips to the top and bottom.
4. Trim the selvages from the 4 1/2" red damask strips reserved for the fourth border. Sew the strips together end to end to make a long 4 1/2" strip. From this long strip, cut (2) 56 1/2" and (2) 48 1/2" lengths *(if your measurements are different, cut to fit your quilt top)*. Stitch the longer strips to the left and right sides of the quilt top. Sew the shorter strips to the top and bottom.
5. Layer the completed quilt top with batting and backing and quilt as desired.
6. Bind the finished quilt using the 2 1/4" green tonal strips.

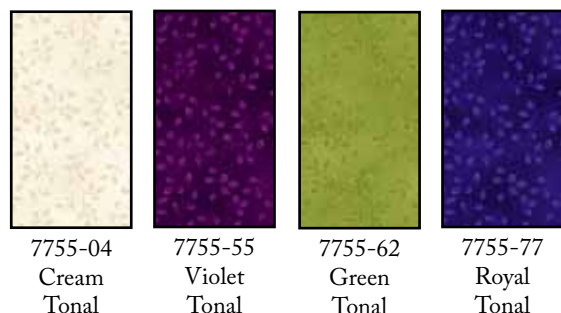
BOTANICA PANEL QUILT

BLUE VERSION

Materials

2/3 yard	Blue Printed Panel <i>(one full panel)</i>	7758-77
7/8 yard	Blue Wildflowers	7761-11
7/8 yard	Blue Damask	7763-77
1/2 yard	Violet Paisley	7764-55
1/4 yard	Cream Tonal	7755-04*
1/4 yard	Violet Tonal	7755-55*
1/4 yard	Green Tonal	7755-62*
7/8 yard	Royal Tonal	7755-77*
3 3/8 yards	Purple Dahlias <i>(for quilt backing/2 horizontal panels)</i>	7759-55

*Please note, all tonal fabrics are from the Folio Basics Collection by Henry Glass, reference swatches are provided below.



Cutting Instructions

Please note: all strips are cut across the width of the fabric from selvage edge to selvage edge.

From the printed panel, cut:

- (1) piece, 22 1/2" wide x 38 1/2" long, with the central floral motif centered in both directions.

From the blue wildflowers, cut:

- (4) 6 1/2" strips for the second border. Trim (2) strips to 38 1/2" long. Trim (2) strips to 22 1/2" long.

From the blue damask, cut:

- (6) 4 1/2" strips for the fourth border.

From the violet paisley, cut:

- (7) 2" strips. Trim (2) strips to 38 1/2" long. Trim (2) strips to 22 1/2" long. Recut (3) strips into (8) 2" x 6 1/2", (4) 2" x 5", and (4) 2" x 3 1/2" pieces.

From the cream tonal, cut:

- (2) 2" strips. Recut into (4) 2" x 3 1/2" pieces and (20) 2" x 2" squares.

From the violet tonal, cut:

- (1) 2" strip. Recut into (4) 2" x 2" squares.

From the green tonal, cut:

- (2) 2" strips. Recut into (4) 2" x 6 1/2" and (4) 2" x 5" pieces.

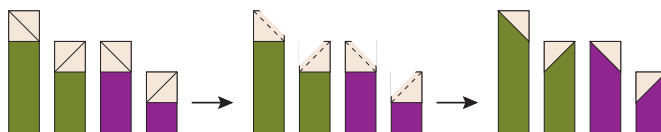
From the royal tonal, cut:

- (6) 2 1/4" strips for the binding.
- (6) 2" strips. Recut (1) strip into (4) 2" x 2" squares. Reserve (5) strips for the third border.

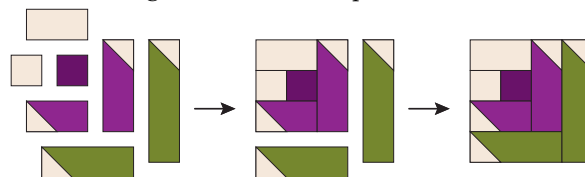
Sewing Instructions

All seams are sewn using 1/4" seam allowance with pieces held right sides together and raw edges even.

1. Draw diagonal lines on the wrong sides of (4) 2" cream tonal squares. Right sides together, layer the marked squares on one end of (1) 2" x 5" and (1) 2" x 3 1/2" violet paisley pieces and (1) 2" x 5" and 2" x 6 1/2" green tonal pieces. Note the orientation of the marked lines on the cream tonal squares. Sew on the marked lines. Trim 1/4" beyond the seam lines and press the resulting cream triangles to make the units shown.



2. To make one flower block, arrange as shown: (1) 2" violet tonal square, (1) 2" cream tonal square, (1) 2" x 3 1/2" cream tonal piece, and all units made in step 1. Assemble the units in the order shown in the diagram below to complete (1) flower block.



3. Repeat steps 1 and 2 to make a total of (4) flower blocks.

Quilt Assembly

1. Referring to the quilt pictured on the cover, stitch 2" x 38 1/2" violet paisley strips to the left and right sides of the trimmed printed panel. Sew 2" royal tonal squares to each end of the (2) 2" x 22 1/2" violet paisley strips. Sew these pieced borders to the top and bottom of the printed panel.
2. Stitch 2" x 6 1/2" violet paisley strips to each end of each 6 1/2" x 38 1/2" blue wildflowers strip. Sew the pieced border units to the left and right sides of the quilt top. Stitch 2" x 6 1/2" violet paisley pieces to each end of both 6 1/2" x 22 1/2" blue wildflowers strips. Stitch a pieced flower block to each end of each border unit, noting orientation of the flower blocks. Sew a pieced border unit to the top and bottom of the quilt top.
3. Trim the selvages from the 2" royal tonal strips reserved for the third border. Sew the strips together end to end to make a long 2" strip. From this long strip, cut (2) 53 1/2" and (2) 40 1/2" lengths (*if your measurements are different, cut to fit your quilt top*). Stitch the longer strips to the left and right sides of the quilt top. Sew the shorter strips to the top and bottom.
4. Trim the selvages from the 4 1/2" blue damask strips reserved for the fourth border. Sew the strips together end to end to make a long 4 1/2" strip. From this long strip, cut (2) 56 1/2" and (2) 48 1/2" lengths (*if your measurements are different, cut to fit your quilt top*). Stitch the longer strips to the left and right sides of the quilt top. Sew the shorter strips to the top and bottom.
5. Layer the completed quilt top with batting and backing and quilt as desired.
6. Bind the finished quilt using the 2 1/4" royal tonal strips.