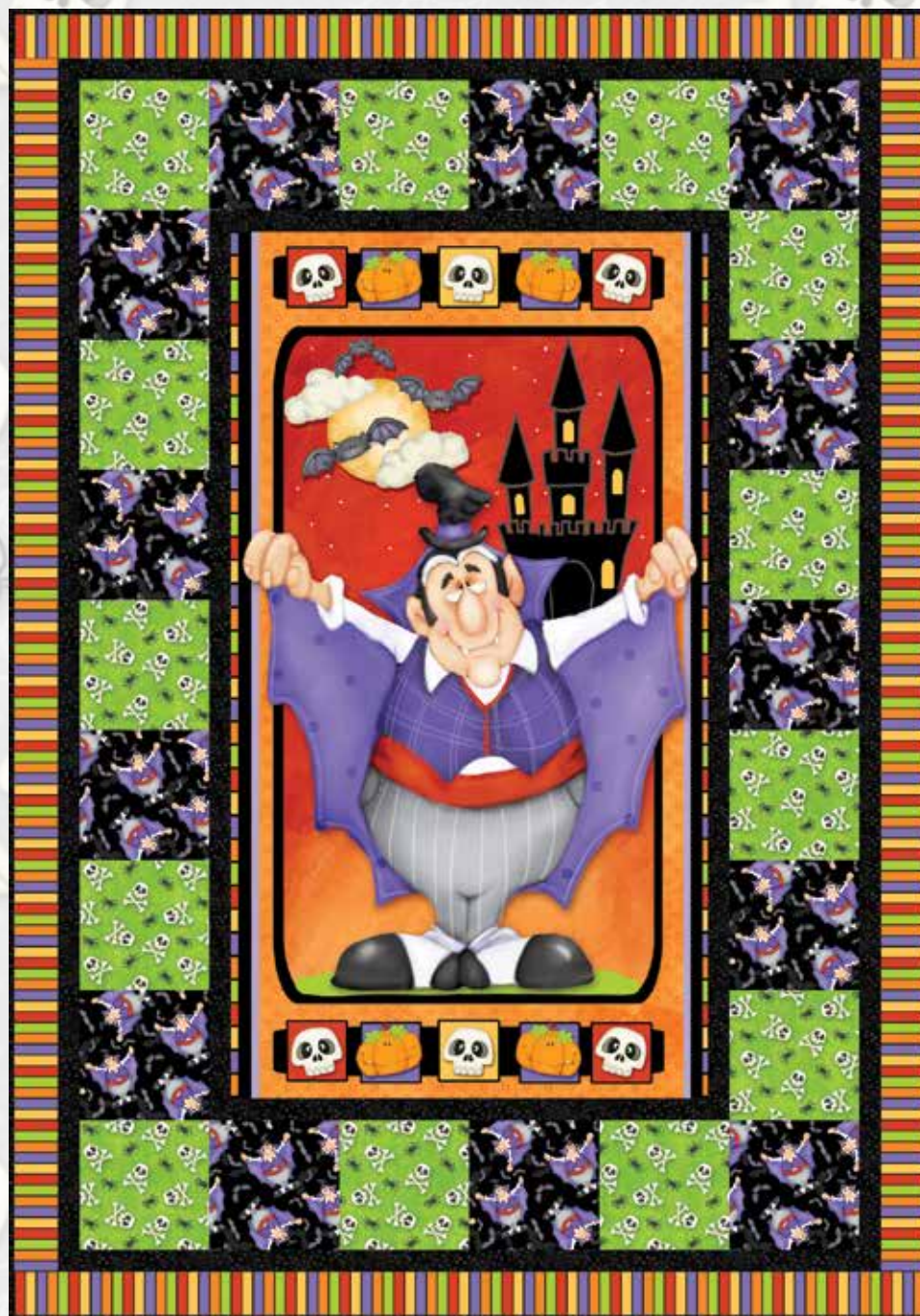


# The Count

By Shelly Comiskey

Simply Shelly  
design and illustration



## Quilt 1

Skill Level: Beginner

A Free Project Sheet From

 Henry Glass & Co., Inc.



facebook

Finished Quilt Size: 42" x 60"  
49 West 37th Street, New York, NY 10018  
tel: 212-686-5194 fax: 212-532-3525  
Toll Free: 800-294-9495  
www.henryglassfabrics.com

# THE COUNT Quilt 1

Finished Quilt Size: 42" x 60"

## Fabrics in the Collection



Novelty Stripe - Multi  
6554-65



Tossed Count - Black  
6553-99



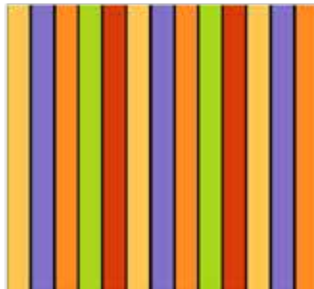
Tossed Count - Green  
6553-66



Eyes - Black  
6552-99



Eyes - Purple  
6552-55



Stripe - Multi  
6551-65



Patch - Multi  
6550-99



Skulls - Gray  
6549-90



Skulls - Green  
6549-66



Skulls - Orange  
6549-33



Pumpkins - Black  
6548-99



Pumpkins - Orange  
6548-33



Panel - Multi  
6547P-33

Select Fabric  
from Folio



Folio - Black  
7755-99

# THE COUNT

Quilt 1

Page 1

## Materials

1 panel	Panel - Multi (A)	6547P-33
$\frac{3}{4}$ yard	Tossed Count - Black (B)	6553-99
$\frac{3}{4}$ yard	Skulls - Green (C)	6549-66
1 yard	Folio - Black (D)	7755-99*
$\frac{1}{2}$ yard	Stripe - Multi (E)	6551-65
3 yards	Pumpkins - Black (Backing)	6548-99

\*Includes binding

## Quilt Cutting Instructions

*Please note: all strips are cut across the width of fabric (WOF) from selvage to selvage edge unless otherwise noted.*

### From the Panel - Multi (A):

- Fussy cut (1) 22  $\frac{1}{2}$ " x 40  $\frac{1}{2}$ " rectangle, centered on the Count.

### From the Tossed Count - Black (B), cut:

- (3) 6  $\frac{1}{2}$ " x WOF strips. Sub-cut strips into (13) 6  $\frac{1}{2}$ " squares.

### From the Skulls - Green (C), cut:

- (3) 6  $\frac{1}{2}$ " x WOF strips. Sub-cut strips into (13) 6  $\frac{1}{2}$ " squares.

### From the Folio - Black (D), cut:

- (2) 2" x 40  $\frac{1}{2}$ " WOF strips.
- (2) 2" x 25  $\frac{1}{2}$ " WOF strips.
- (3) 1  $\frac{1}{2}$ " x WOF strips. Sew the strips together end to end with diagonal seams and cut (2) 1  $\frac{1}{2}$ " x 54  $\frac{1}{2}$ " strips.
- (2) 1  $\frac{1}{2}$ " x 38  $\frac{1}{2}$ " WOF strips.
- (6) 2  $\frac{1}{2}$ " x WOF strips for the binding.

### From the Stripe - Multi (E), cut:

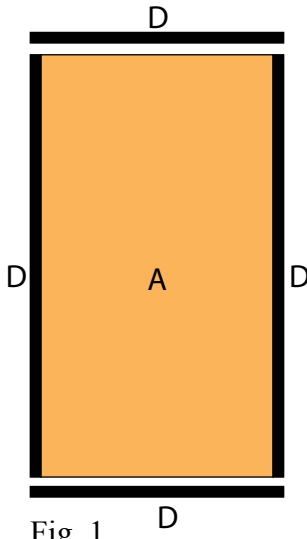
- (5) 2  $\frac{1}{2}$ " x WOF strips. Sew the strips together end to end with diagonal seams and cut (2) 2  $\frac{1}{2}$ " x 56  $\frac{1}{2}$ " strips and (2) 2  $\frac{1}{2}$ " x 42  $\frac{1}{2}$ " strips.

### From the Pumpkins - Black (Backing), cut:

- (2) 50" x WOF strips for the backing. Sew the strips together and trim to make the 50" x 68" back.

### Sewing Instructions

1. Sew (1) 2" x 40 1/2" Fabric D strip to each side of the 22 1/2" x 40 1/2" Fabric A rectangle. Sew (1) 2" x 25 1/2" Fabric D strip to the top and to the bottom of the Fabric A rectangle. Trim the block to measure 24 1/2" x 42 1/2" to make the Center Block (Fig. 1).



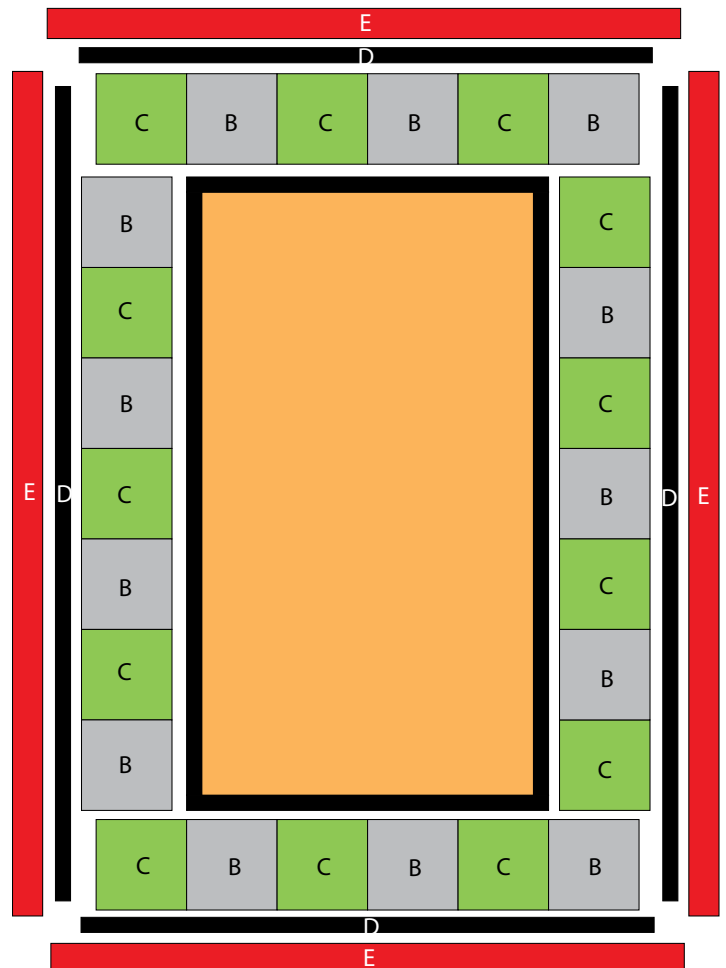
Trim to measure 24 1/2" x 42 1/2" after the borders are added.

2. Sew (4) 6 1/2" Fabric B squares and (3) 6 1/2" Fabric C squares together, alternating them, to make the left side border. Sew (4) 6 1/2" Fabric C squares and (3) 6 1/2" Fabric B squares together, alternating them, to make the right side border. Sew the borders to the Center Block.
3. Sew (3) 6 1/2" Fabric C squares and (3) 6 1/2" Fabric B squares together, alternating them, to make (1) strip. Repeat to make a second strip. Sew the strips to the top and to the bottom of the Center Block.

### Quilt Top Assembly

(Refer to the *Quilt Layout while assembling.*)

4. Sew (1) 1 1/2" x 54 1/2" Fabric D strip to each side of the Center Block. Sew (1) 1 1/2" x 38 1/2" Fabric D strip to the top and to the bottom of the Center Block to make the quilt top.
5. Sew (1) 2 1/2" x 56 1/2" Fabric E strip to each side of the quilt top. Sew (1) 2 1/2" x 42 1/2" Fabric E strip to the top and to the bottom of quilt top.
6. Layer and quilt as desired.
7. Sew the (6) 2 1/2" x WOF Fabric D strips together, end to end with 45-degree seams, to make the binding. Fold this long strip in half lengthwise with wrong sides together and press.
8. Bind as desired.



Quilt Layout