



Clean Living

By Barbara Jones of Quilt Soup

TV B.C. (Before Cable)



Quilt Design by Barbara Jones

Skill Level: Advanced Beginner

A Free Project Sheet From

 **Henry Glass & Co., Inc.**



Quilt 1

[facebook](#)

Finished Quilt Size: 44" x 52"
49 West 37th Street, New York, NY 10018
tel: 212-686-5194 fax: 212-532-3525
Toll Free: 800-294-9495
www.henryglassfabrics.com

CLEAN LIVING Quilt 1

Finished Quilt Size: 44" x 52"

Fabrics in the Collection



Furniture - Multi
6686-44



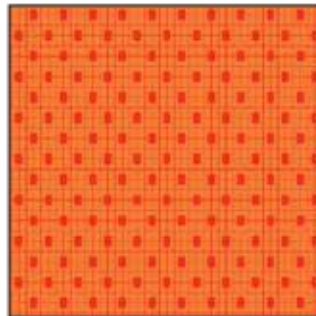
Leaves - Multi
6687-16



Leaves - Taupe
6687-33



Geometric - Multi
6688-16



Monotone Geo - Orange
6689-30



Monotone Geo - Taupe
6689-33



Monotone Geo - Green
6689-66



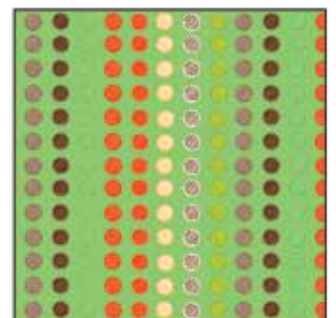
Connecting Geo - Brown
6690-33



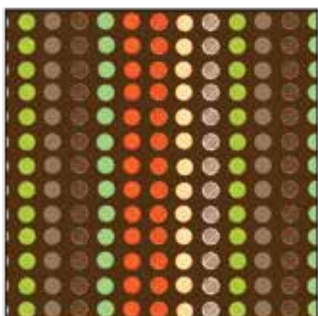
Connecting Geo - Cream
6690-40



Connecting Geo - Red
6690-88



Dots - Blue
6692-11



Dots - Brown
6692-33



Floral - Blue
6693-11



Floral - Orange
6693-30



Floral - Green
6693-66

Materials

2/3 yard	Monotone Geo - Taupe (A)	6689-33
2/3 yard	Monotone Geo - Orange (B)	6689-30
3/4 yard	Connecting Geo - Red (C)	6690-88
1/2 yard	Monotone Geo - Green (D)	6689-66
1/8 yard	Connecting Geo - Cream (E)	6690-40
1/2 yard	Floral - Blue (F)	6693-11
1/2 yard	Furniture - Multi (G)	6686-44
1 yard	Connecting Geo - Brown (H)	6690-33*
1/4 yard	Dots - Blue (I)	6692-11
1/3 yard	Leaves - Multi (J)	6687-16
3 yards	Leaves - Taupe (Backing)	6687-33

*Includes binding

Quilt Cutting Instructions

Please note: all strips are cut across the width of fabric (WOF) from selvage to selvage edge unless otherwise noted.

From the Monotone Geo - Taupe (A), fussy cut:

- (1) 6 1/2" x WOF strip. Sub-cut strip into (1) 6 1/2" x 19 1/2" and (1) 2 1/2" x 19 1/2" strip.
- (1) 6 1/2" x WOF strip. Sub-cut strip into (1) 6 1/2" x 9 1/2" strip, (1) 4 1/2" x 8 1/2" and (1) 2 1/2" x 8 1/2" strip. Cut in the order listed.
- (1) 4 1/2" x WOF strip. Sub-cut strip into (2) 4 1/2" x 5 1/2" strips.
- (1) 3 1/2" x WOF strip. Sub-cut strip into (2) 3 1/2" x 16 1/2" strips.

From the Monotone Geo - Orange (B), cut:

- (1) 2 1/2" x WOF strip. Sub-cut strip into (1) 2 1/2" x 19 1/2" strip, (1) 2 1/2" x 8 1/2" strip (1) 1 1/2" x 6 1/2" strip.
- (1) 5 1/2" x WOF strip. Sub-cut strip into (2) 5 1/2" x 7 1/2" strips, (1) 4 1/2" x 8 1/2" strip, (1) 3 1/2" x 6 1/2" strip and (1) 1 1/2" x 13 1/2" strip.
- (1) 6 1/2" x WOF strip. Sub-cut strip into (1) 6 1/2" x 19 1/2" strip and (1) 1 1/2" x 13 1/2" strip.
- See instructions to cut (2) outer knobs.
- See instructions to cut (2) antennae.
- See instructions to cut (1) antenna base.
- See instructions to cut (1) right leg and (1) left leg.

From the Connecting Geo - Red (C), cut:

- (1) 5 1/2" x WOF strip. Sub-cut strip into (2) 5 1/2" x 16 1/2" strips and (1) 3 1/2" x 6 1/2" strip.
- (1) 2 1/2" x WOF strip. Sub-cut strip into (2) 2 1/2" x 20 1/2" strips.
- (2) 1 1/2" x WOF strips. Sub-cut strips into (2) 1 1/2" x 13 1/2" strips, (2) 1 1/2" x 5 1/2" strips.
- (1) 6 1/2" x WOF strip. Sub-cut strip into (1) 6 1/2" x 9 1/2" strip and (1) 1 1/2" x 6 1/2" strip.
- See instructions to cut (6) front knobs.

From the Monotone Geo - Green (D), cut:

- (1) 6 1/2" x WOF strip. Sub-cut strip into (1) 6 1/2" x 19 1/2"

- strip and (2) 6 1/2" x 9 1/2" strips.
- (1) 4 1/2" x WOF strip. Sub-cut strip into (1) 4 1/2" x 8 1/2" strip, (1) 2 1/2" x 19 1/2" strip and (1) 2 1/2" x 8 1/2" strip.
- See instructions to cut (2) antenna bases.
- See instructions to cut (4) antennae.
- See instructions to cut (2) left legs.
- See instructions to cut (2) right legs.
- See instructions to cut (2) front knobs.

From the Connecting Geo - Cream (E), cut:

- See instructions to cut (8) outer knobs

From the Floral - Blue (F), cut:

- (1) 6 1/2" x WOF strip. Sub-cut strip into (1) 6 1/2" x 19 1/2" strip and (1) 2 1/2" x 19 1/2" strip.
- (1) 4 1/2" x WOF strip. Sub-cut strip into (1) 4 1/2" x 8 1/2" strip, (1) 2 1/2" x 8 1/2" strip and (2) 1 1/2" x 5 1/2" strips.
- See instructions to cut (2) front knobs.

From the Furniture - Multi (G), cut:

- (1) 6 1/2" x WOF strip. Sub-cut strip into (1) 6 1/2" x 19 1/2" strip and (1) 2 1/2" x 19 1/2" strip.
- (1) 4 1/2" x WOF strip. Sub-cut strip into (1) 4 1/2" x 8 1/2" strip, (1) 3 1/2" x 6 1/2" strip and (1) 2 1/2" x 8 1/2" strip.
- (1) 1 1/2" x WOF strip. Sub-cut strip into (2) 1 1/2" x 13 1/2" strips and (1) 1 1/2" x 6 1/2" strip.

From the Connecting Geo - Brown (H), cut:

- (1) 1 1/2" x WOF strip. Sub-cut strip into (6) 1 1/2" x 5 1/2" strips and (1) 1 1/2" x 6 1/2" strip.
- (1) 1 1/2" x WOF strip. Sub-cut strip into (2) 1 1/2" x 13 1/2" strips.
- (1) 3 1/2" x WOF strip. Sub-cut (1) 3 1/2" x 6 1/2" strip and (1) 2 1/2" x 24 1/2" strip.
- (1) 2 1/2" x 24 1/2" WOF strip.
- (2) 1 1/2" x WOF strips. Sub-cut strips into (4) 1 1/2" x 16 1/2" strips.
- (5) 2 1/2" x WOF strips for the binding.
- See instructions to cut (4) antennae.
- See instructions to cut (2) antenna bases.
- See instructions to cut (2) left legs and (2) right legs.

From the Dots - Blue (I), cut:

- (1) 2" x WOF strip. Sub-cut strip into (2) 2" x 16 1/2" strips and (1) 1 1/2" x 5 1/2" strip.
- (1) 3 1/2" x WOF strip. Sub-cut strip into (1) 3 1/2" x 6 1/2" strip, (2) 1 1/2" x 13 1/2" strips and (1) 1 1/2" x 6 1/2" strip and (1) 1 1/2" x 5 1/2" strip.

From the Leaves - Multi (J), cut:

- (1) 6 1/2" x WOF strip. Sub-cut strip into (1) 6 1/2" x 9 1/2" strip.
- (1) 2 1/2" x WOF strip. Sub-cut strip into (2) 2 1/2" x 16 1/2" strips.

From the Leaves - Taupe (Backing), cut:

- (2) 52" x WOF strips for the backing. Sew the strips together and trim to make the 52" x 60" back.

Sewing Instructions

1. Sew (1) 1 1/2" x 6 1/2" Fabric B strip to the left side of (1) 9 1/2" x 6 1/2" Fabric C strip. Sew (1) 3 1/2" x 6 1/2" Fabric B strip to the right side of the Fabric C strip. Sew (1) 1 1/2" x 13 1/2" Fabric B strip to the top and to the bottom of the Fabric C strip to make (1) C-Block (Fig. 1).

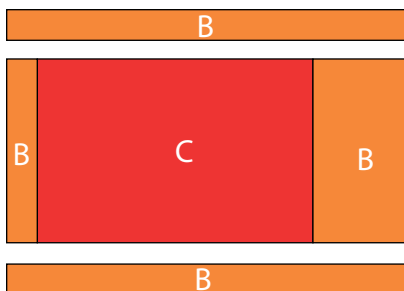


Fig. 1

2. Sew (1) 2 1/2" x 8 1/2" Fabric A strip to the left side of (1) C-Block. Sew (1) 4 1/2" x 8 1/2" Fabric A strip to the right side of the C-Block. Sew (1) 6 1/2" x 19 1/2" Fabric A strip to the top of the C-Block. Sew (1) 2 1/2" x 19 1/2" Fabric A strip to the bottom of the C-Block (Fig. 2).

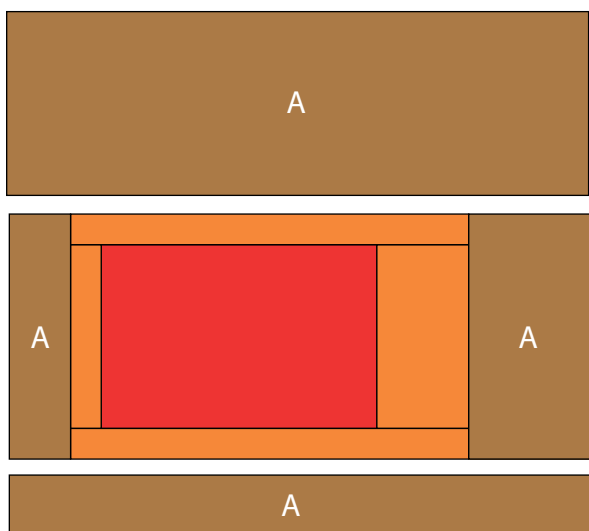


Fig. 2

3. Following the manufacturer's instructions, trace the listed number of each template onto the paper side of the fusible web. Roughly cut out each template about 1/8" outside the drawn lines.

4. Press each template onto the wrong side of the fabrics as listed on the templates. Cut out each template on the drawn lines.

5. Refer to the Figure 3 to arrange and press the Fabric D antenna base, (2) Fabric D antennae, (1) Fabric D left leg, (1) Fabric D right leg, (2) Fabric D knobs and (2) Fabric E outer knobs onto the C-Block.

6. Finish the raw edges of each shape with a decorative stitch such as a buttonhole or satin stitch to make (1) TV Block One.

TV Block One

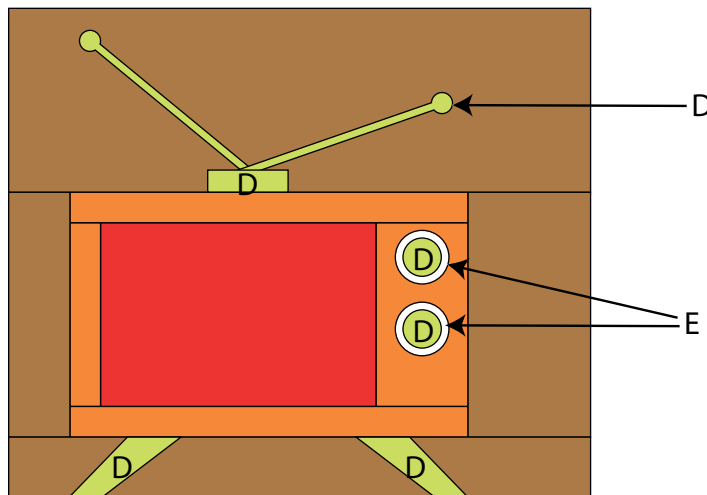


Fig. 3

7. Repeat Steps 1-6 using Figures 4 through 7 for fabric identification and location to make TV Block Two, TV Block Three, TV Block Four and TV Block Five. Note that on TV Block Four, the Fabric D side strips are reversed.

TV Block Two

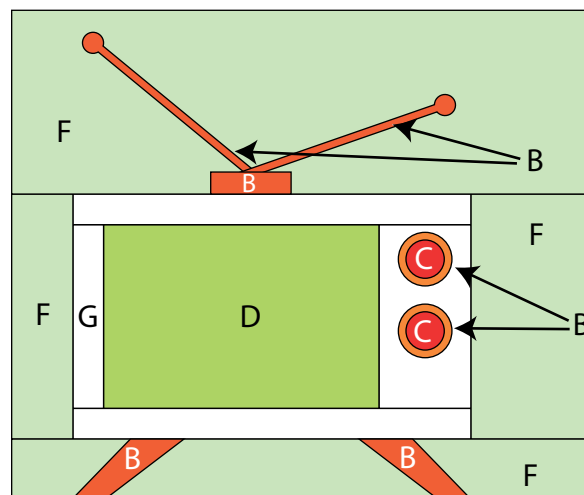


Fig. 4

TV Block Three

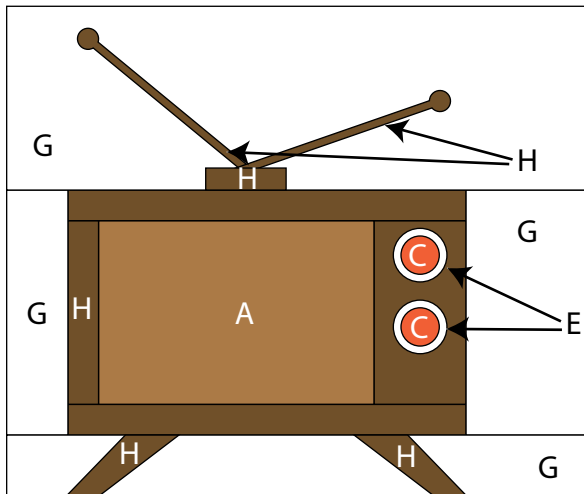


Fig. 5

TV Block Four

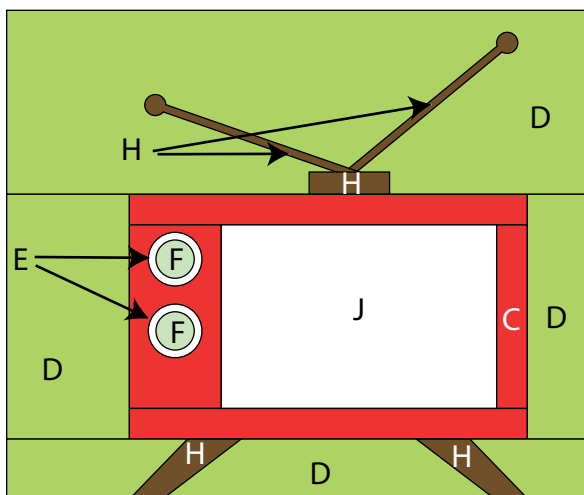


Fig. 6

TV Block Five

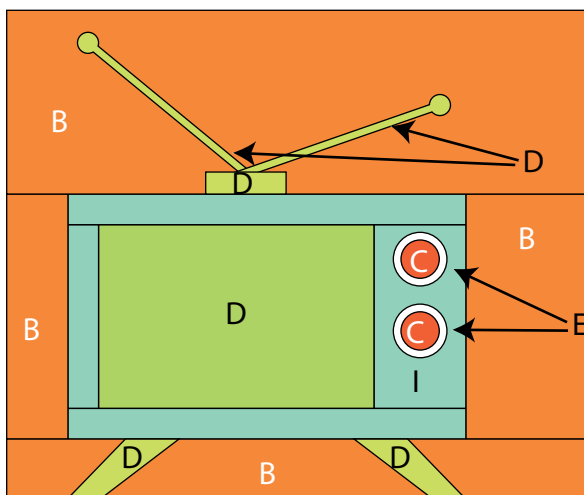


Fig. 7

8. Sew (1) $4\frac{1}{2}$ " x $5\frac{1}{2}$ " Fabric A strip, (3) $1\frac{1}{2}$ " x $5\frac{1}{2}$ " Fabric H strips, (1) $1\frac{1}{2}$ " x $5\frac{1}{2}$ " Fabric I strip, (1) $1\frac{1}{2}$ " x $5\frac{1}{2}$ " Fabric C strip and (1) $5\frac{1}{2}$ " x $7\frac{1}{2}$ " Fabric B strip together to make (1) Unit 1 (Fig. 8). Repeat to make a second Unit 1.

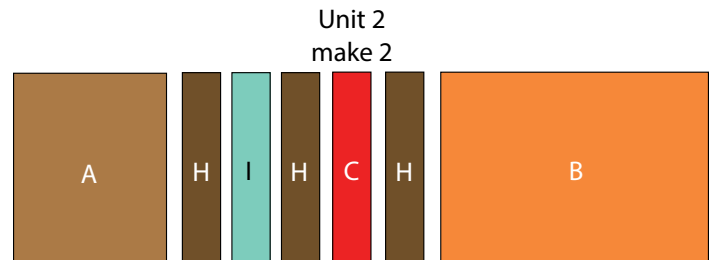


Fig. 8

9. Sew (1) $2\frac{1}{2}$ " x $24\frac{1}{2}$ " Fabric H strip to the left end of (1) $2\frac{1}{2}$ " x $20\frac{1}{2}$ " Fabric C strip to make (1) sashing row. Repeat to make a second sashing row.

10. Sew (1) $5\frac{1}{2}$ " x $16\frac{1}{2}$ " Fabric C strip, (1) $1\frac{1}{2}$ " x $16\frac{1}{2}$ " Fabric H strip, (1) $3\frac{1}{2}$ " x $16\frac{1}{2}$ " Fabric A strip, (1) 2 " x $16\frac{1}{2}$ " Fabric I strip and (1) $2\frac{1}{2}$ " x $16\frac{1}{2}$ " Fabric J strip together lengthwise and in that order to make (1) CJ strip. Repeat to make a second CJ strip.

Quilt Top Assembly

(Refer to the Quilt Layout while assembling.)

11. Sew the TV Block One, (1) $1\frac{1}{2}$ " x $16\frac{1}{2}$ " Fabric H strip, TV Block Two and (1) Unit 1 together, in that order, to make Row One.

12. Sew (1) CJ strip to each side of TV Block Three to make Row Two. Pay attention to the orientation of the CJ strips.

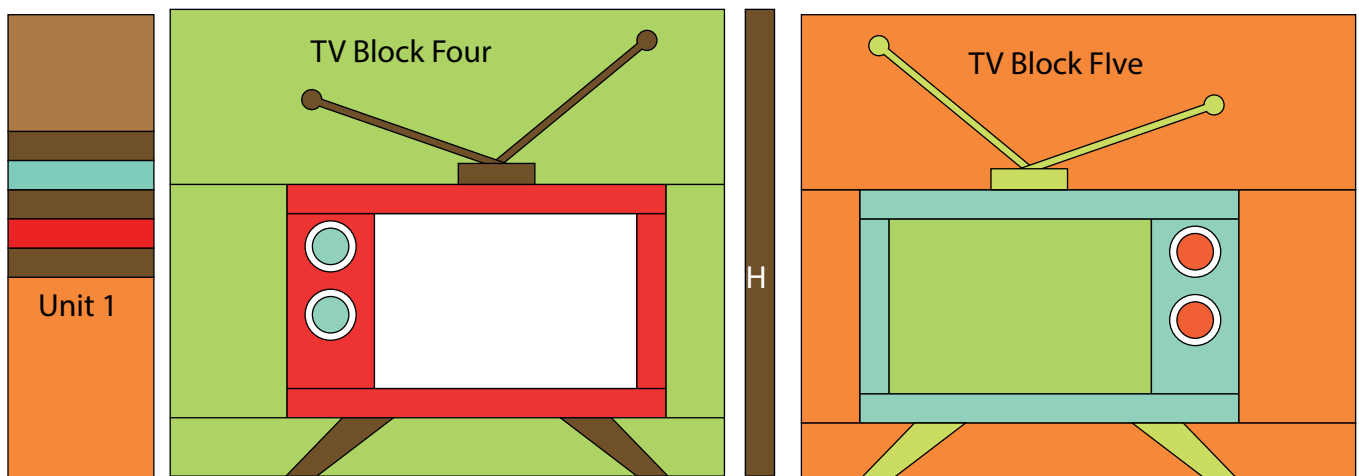
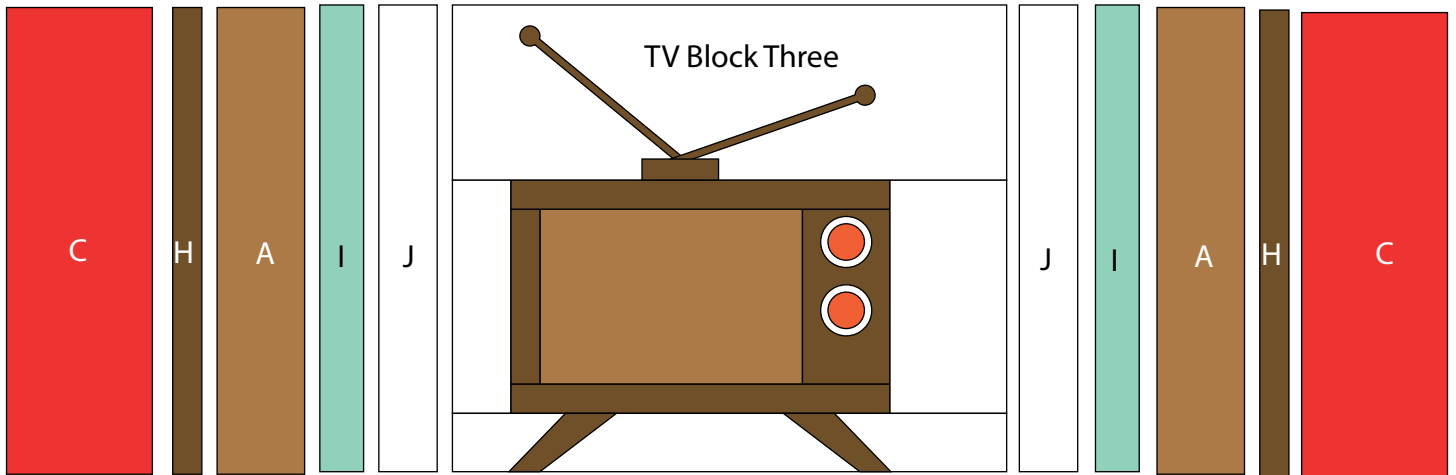
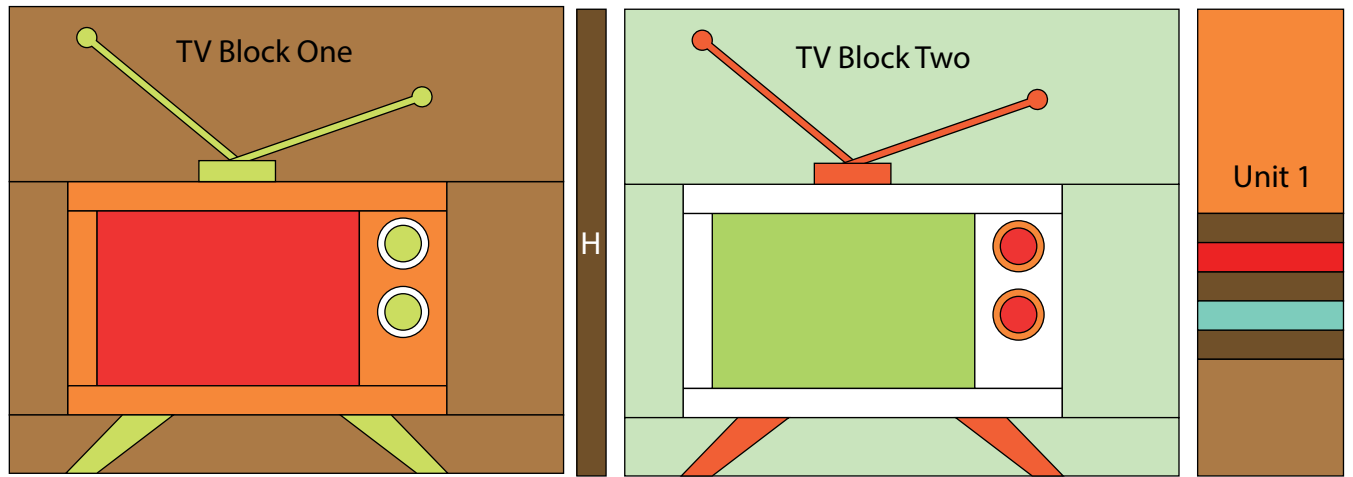
13. Sew (1) Unit 1, TV Block Four, (1) $1\frac{1}{2}$ " x $16\frac{1}{2}$ " Fabric H strip and the TV Block Five together, in that order, to make Row Three.

14. Sew the (3) rows, in numerical order, and the (2) sashing strips together, lengthwise, alternating them, to make the quilt top.

15. Layer and quilt as desired.

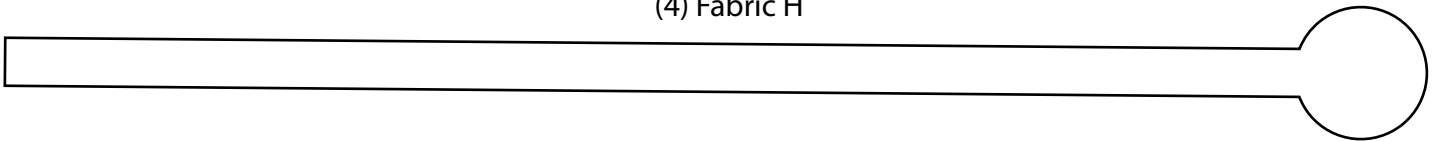
16. Sew the (5) $2\frac{1}{2}$ " x WOF Fabric H strips together, end to end with 45-degree seams, to make the binding. Fold this long strip in half lengthwise with wrong sides together and press.

17. Bind as desired.

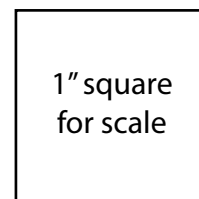
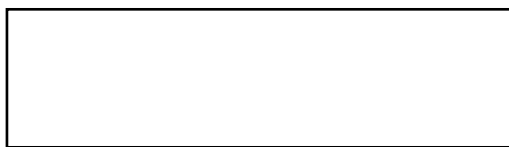


Quilt Layout

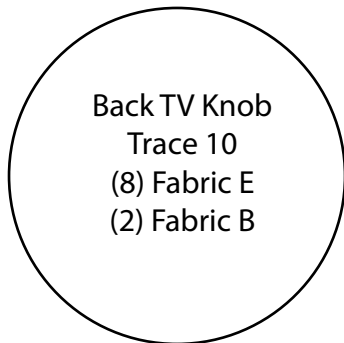
Antennae
Trace 10
(2) Fabric B
(4) Fabric D
(4) Fabric H



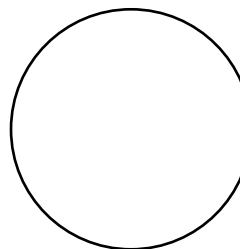
Antenna Base
Trace 5
(1) Fabric B
(2) Fabric D
(2) Fabric H



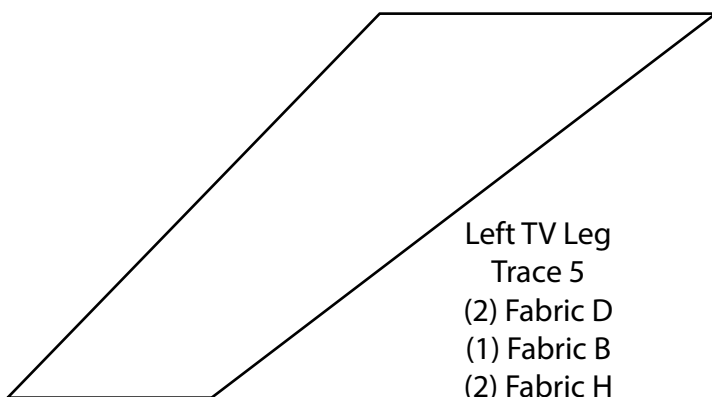
Back TV Knob
Trace 10
(8) Fabric E
(2) Fabric B



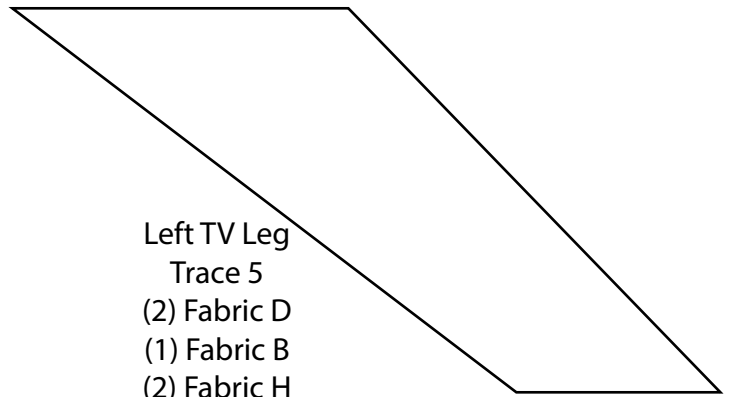
Front TV Knob
Trace 10
(6) Fabric C
(2) Fabric D
(2) Fabric F



Left TV Leg
Trace 5
(2) Fabric D
(1) Fabric B
(2) Fabric H



Left TV Leg
Trace 5
(2) Fabric D
(1) Fabric B
(2) Fabric H



Every effort has been made to ensure that all projects are error free. All the information is presented in good faith, however no warranty can be given nor results guaranteed as we have no control over the execution of instructions. Therefore, we assume no responsibility for the use of this information or damages that may occur as a result. When errors are brought to our attention, we make every effort to correct and post a revision as soon as possible. Please make sure to check www.henryglassfabrics.com for pattern updates prior to starting the project. We also recommend that you test the project prior to cutting for kits. Finally, all free projects are intended to remain free to you and are not for resale.