

# Amelie



by Chelsea Andersen



Eiffel Tower Version  
Finished Quilt Size: 68" x 68"

Five Hearts Version  
Finished Quilt Size: 68" x 68"



Free Pattern Sheet



Henry Glass & Co.

49 West 37th Street, New York, NY 10018

tel: 212-686-5194 fax: 212-532-3525

Toll Free: 800-294-9495

[www.henryglassfabrics.com](http://www.henryglassfabrics.com)

facebook

# Amelie

Quilt Design by: Cate Tallman-Evans  
Finished Quilt Size: 68" x 68"

## Fabrics in the Collection



9354-11  
Blue Floral



9354-22  
Pink Floral



9355-11  
Large Blue Floral



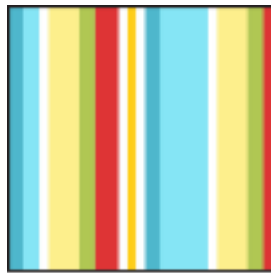
9355-48  
Large Cream Floral



9356-11  
Light Blue Tonal



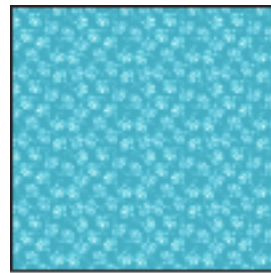
9356-22  
Pink Tonal



9357-11  
Blue Stripe



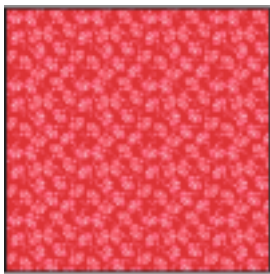
9357-22  
Pink Stripe



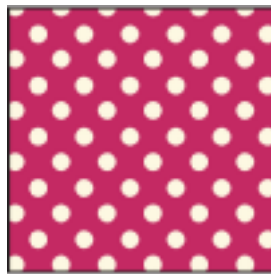
9358-11  
Dark Blue Tonal



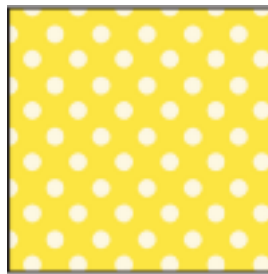
9358-66  
Green tonal



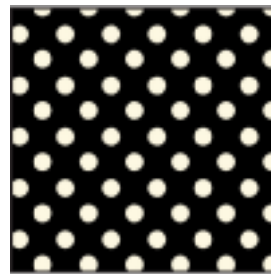
9358-88  
Red Tonal



9359-22  
Pink Dot



9359-44  
Yellow Dot



9359-99  
Black Dot



9360-02  
White Floral



9360-44  
Yellow Floral



9360-88  
Red Floral

## Materials

½ yard	Blue Floral	(9354-11)
¼ yard	Pink Floral	(9354-22)
1 ¼ yards	Large Blue Floral	(9355-11)
¼ yard	Light Blue Tonal	(9356-11)
⅝ yard	Pink Tonal	(9356-22)
1 ¼ yards	Pink Stripe	(9357-22)
¼ yard	Dark Blue Tonal	(9358-11)
¼ yard	Green Tonal	(9358-66)
¼ yard	Red Tonal	(9358-88)
⅜ yard	Pink Dot	(9359-22)
1 ½ yards	Black Dot	(9359-99)
	<i>(includes binding)</i>	
½ yard	White Floral	(9360-02)
4 ½ yards	Large Blue Floral	(9355-11)
	<i>(for quilt backing)</i>	

template plastic

usual rotary cutting and sewing supplies

thread to match appliqué

all supplies for chosen method of appliqué such as

- (1) yard of freezer paper or 20" wide, light-weight, fusible webbing for machine appliqué

76" x 76" piece of batting

## Cutting Instructions

*Please note: all strips are cut across the width of the fabric from selvage edge to selvage edge.*

**From the blue floral and white floral, cut:**

- (2) 5 ¾" strips. Recut into (12) 5 ¾" x 5 ¾" squares.

**From the pink floral, cut:**

- (1) 5 ¾" strip. Recut into (5) 5 ¾" x 5 ¾" squares.

**From the large blue floral, cut:**

- (6) 6 ½" strips for the third border.

**From EACH of the light blue tonal, dark blue tonal, green tonal, red tonal, yellow dot, and pink dot, cut:**

- (2) 2 ¼" strips.

**From the pink tonal, cut:**

- (1) 11 ⅛" strip. Recut into (3) 11 ⅛" x 11 ⅛" squares. Recut each square on both diagonals to yield (4) squares.

- (1) 7" strip. Recut into (2) 7" squares and (4) 2 ¼" x 2 ¼" squares. Cut each of the 7" squares in half on one diagonal to yield (2) triangles.

**From the pink stripe, cut:**

- (7) 3 ½" strips for the fifth border.  
(5) 2 ½" strips for the first border.

**From the black dot, cut:**

- (10) 2 ¼" strips. Set aside (7) strips for the binding.  
Recut (3) strips into (40) 2 ¼" x 2 ¼" squares.  
(5) 1 ¾" strips for the second border.  
(7) 1 ¼" strips for the fourth border.

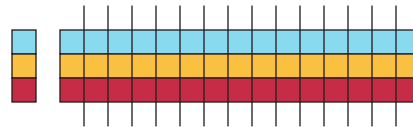
## Prepare the Appliqués

1. If making the Eiffel Tower version of the quilt, enlarge the paper pattern for the tower appliqué on the next page 200%. A 17" long piece of paper is required for the full size tower template. The heart template is provided at full size.
2. Using the prepared paper patterns and template plastic, make a template for the heart shape and, if desired, the Eiffel Tower shape.
3. Depending upon the version of the quilt you are making, prepare either (5) heart motifs or (4) heart motifs from the pink dot fabric and (1) tower motif from the black dot fabric. Prepare each motif as necessary for your preferred method of appliqué.
4. Using your preferred method, appliqué a prepared heart motif to each of (4) 5 ¾" white floral squares, noting orientation of the background square. For the Five Hearts version of the quilt, appliqué a fifth prepared heart motif to another 5 ¾" white floral square. If making the Eiffel Tower version of the quilt, reserve the prepared tower motif until the center of the quilt top is completed.

## Sewing Instructions

*All seams are sewn using 1/4" seam allowance with pieces held right sides together and raw edges even.*

1. Sewing lengthwise, stitch 2 ¼" light blue tonal and red tonal strips to opposite sides of a 2 ¼" yellow tonal strip. Press the seams toward the yellow dot strip. Repeat to make a second strip set. From these strip sets, cut a total of (32) 2 ¼" wide segments.



2. Sewing lengthwise, stitch 2 ¼" dark blue tonal and green tonal strips to opposite sides of a 2 ¼" pink dot strip. Press the seams toward the pink dot strip. Repeat to make a second strip set. From these strip sets, cut a total of (32) 2 ¼" wide segments.



## Quilt Assembly

1. Using the quilt pictured on the cover, arrange the assorted 5 ¾" and 2 ¼" squares (including the heart appliqué blocks), the strip set segments, and the large pink tonal triangles into (15) diagonal rows of blocks and sashing. Note the orientation of the appliqué blocks and strip sets. Also note that the fabric placements are different in the center of the quilt depending upon which version you are making. Use the quilts pictured on the cover as a guide to correct fabric placement for your quilt. Stitch the units into rows and sew the rows together. Stitch a small pink triangle to each corner to complete the quilt center. If making the Eiffel Tower version of the quilt, appliqué the tower motif to the quilt top now.

## Quilt Assembly (cont.)

2. **(First Border)** Trim the selvages from the 2 ½" pink stripe strips and sew the strips together end to end to make a long 2 ½" strip. From this long strip, cut (2) 46 ½" and (2) 42 ½" lengths (*if your measurements are different, cut to fit your quilt top*). Stitch the shorter lengths to the left and right sides of the quilt top. Stitch the longer lengths to the top and bottom.
3. **(Second Border)** Trim the selvages from the 1 ¾" black dot strips and sew the strips together end to end to make a long 1 ¾" strip. From this long strip, cut (2) 49" and (2) 46 ½" lengths (*if your measurements are different, cut to fit your quilt top*). Stitch the shorter lengths to the left and right sides of the quilt top. Stitch the longer lengths to the top and bottom of the quilt top.
4. **(Third Border)** Trim the selvages from the 6 ½" large blue floral strips and sew the strips together end to end to make a long 6 ½" strip. From this long strip, cut (2) 61" and (2) 49" lengths (*if your measurements are different, cut to fit your quilt top*). Stitch the shorter lengths to the left and right sides of the quilt top. Stitch the longer lengths to the top and bottom of the quilt.
5. **(Fourth Border)** Trim the selvages from the 1 ¼" black dot strips and sew the strips together end to end to make a long 1 ¼" strip. From this long strip, cut (2) 62 ½" and (2) 61" lengths (*if your measurements are different, cut to fit your quilt top*). Stitch the shorter lengths to the left and right sides of the quilt top. Stitch the longer lengths to the top and bottom of the quilt top.
6. **(Fifth Border)** Trim the selvages from the 3 ½" pink stripe strips and sew the strips together end to end to make a long 3 ½" strip. From this long strip, cut (2) 68 ½" and (2) 62 ½" lengths (*if your measurements are different, cut to fit your quilt top*). Stitch the shorter lengths to the left and right sides of the quilt top. Stitch the longer lengths to the top and bottom of the quilt top.
7. Layer the completed quilt top with batting and backing and quilt as desired.
8. Trim the finished quilt and bind using the 2 ¼" black dot strips.

